

SUAVE



**Art and Design
Newsletter
Issue 05**

Beauty in
design

**“Art is chaos
taking shape”
–Pablo Picasso**

Table of Contents

02	EDITORS' NOTE
03	JEWELLERY DESIGNING
04	STUDENT ILLUSTRATIONS
05	THE TIMELESS ALLURE OF NAVRATANS
06	ELECTRIC CARS AND FUEL CARS
07	MUSCLE CARS
08	THE CLASSICS
09	HANDBAG DESIGNING
10	THE ICONIC ONES



EDITORS' NOTE

Welcome to the 5th edition of SUAVE, where creativity knows no bounds! As we delve into the captivating worlds of jewellery designing, transportation design, and handbag design, we celebrate the artistry and innovation that define these fields.

In our jewellery section, we explore the historical significance of jewellery, the various styles, trends, and delve into the fascinating world of the nine gems of the Navratnas. The stories behind these creations are as stunning as the pieces themselves. Discover how these elements not only enhance beauty but also carry deep cultural meanings.

Shifting gears, our focus on transportation design invites you to envision the future of mobility. We highlight groundbreaking concepts that merge aesthetics with functionality, showcasing how design can enhance our everyday journeys. Additionally, we explore the design concept behind automobiles emphasising on the importance of visionary thinking in automotive design. Finally, we delve into the realm of handbag design, where fashion meets practicality. Here, we uncover the stories behind some of the most iconic handbags in the world. Whether it's a statement piece or a minimalist design. Handbags continue to evolve, reflecting the diverse lifestyles of their wearers.

Join us as we celebrate the visionaries who shape these industries, push boundaries and inspire us all. We hope this issue ignites your passion for design and encourages you to see the beauty in every detail.

We would also like to thank Sir Nikunja and the art department for their constant support and guidance.

Editors-

Sahnvi Agarwal

Mudra Bishnoi

Kaavya Bhansali



JEWELLERY DESIGNING

Indian jewellery is quite a vibrant expression of the country's rich cultural heritage, reflecting its various history and artistic tradition. It goes so far back in thousands of years and has been quite simply understood in the role of status, spirituality, and craftsmanship. Each region had its different styles. From intricate gold Kundan pieces and meenakari to detailed silver jewellery of Rajasthan and ornate temple jewelry of South India, each design has a story to it. Today, Indian jewelry forms a large part of traditional celebrations as well as modern fashion- and that is what makes it a blend of traditional motifs with a contemporary flair. Whether it is passed down as heirlooms or fashioned for new events, Indian jewellery remains such a compelling testament of heritage and artistry.

“You can’t buy happiness but you can buy jewellery and that’s kind of the same.”

Historical Significance

In India, jewellery is an artefact that has been studied and found to have thousands of years in its history attached, with references seen both in ancient texts and archaeological sites. It has been seen as a traditional symbol associated with status, wealth, and spirituality for centuries. Many of them are talismans rather than mere adorns.



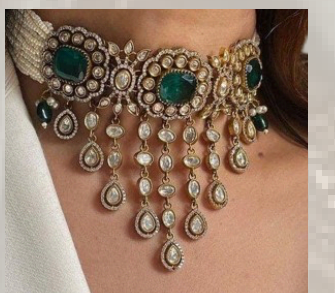
Varieties of Indian Jewellery

1. Gold Ornaments: While some see gold as merely a religious material, gold ornaments are hugely popular in India. Intricacy is carried on in various traditional designs like kundan and meenakari as well.



2. Silver Ornaments: The popularity of silver ornaments in Rajasthan, Gujarat, and particularly in Jodhpur, is quite noticeable. Most silver ornaments have intricate engravings and often have semi-precious stones to enhance their beauty.

3. Costume Jewellery: With the changing fashion, costume jewellery is inexpensive but fashionable but has traditional prints mixed with modern designs.



4. Temple Jewellery: This one hails from Southern India and is regarded as being highly ornaments with intricate designs that often depict deities and religious motifs; therefore it is an important part of cultural and spiritual ceremonies.

Regional Styles

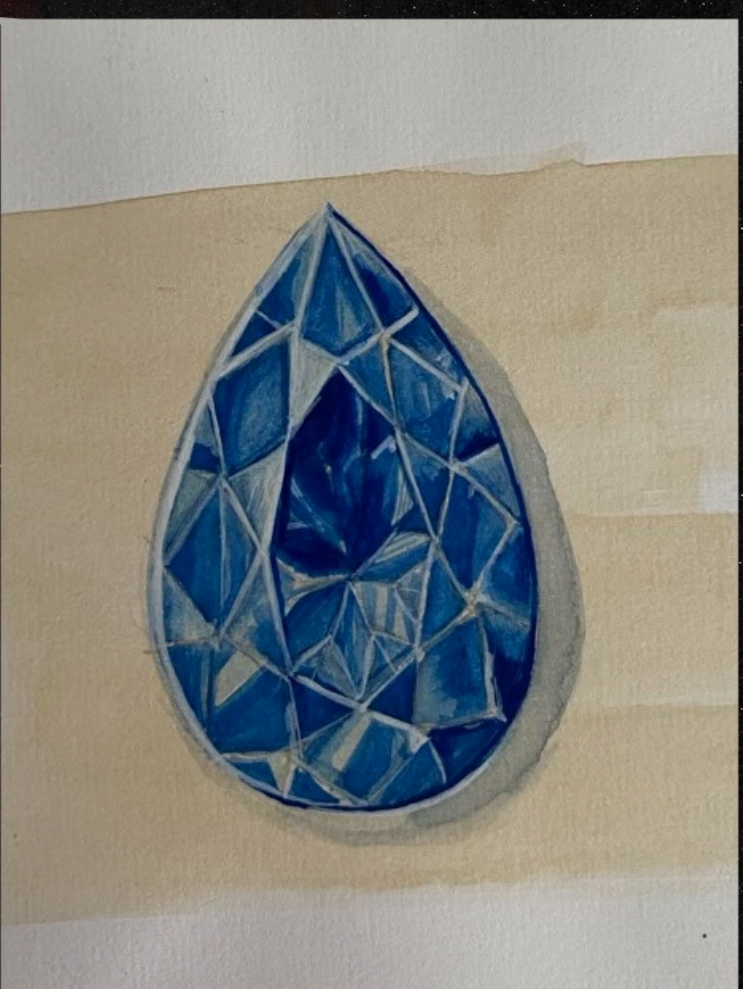
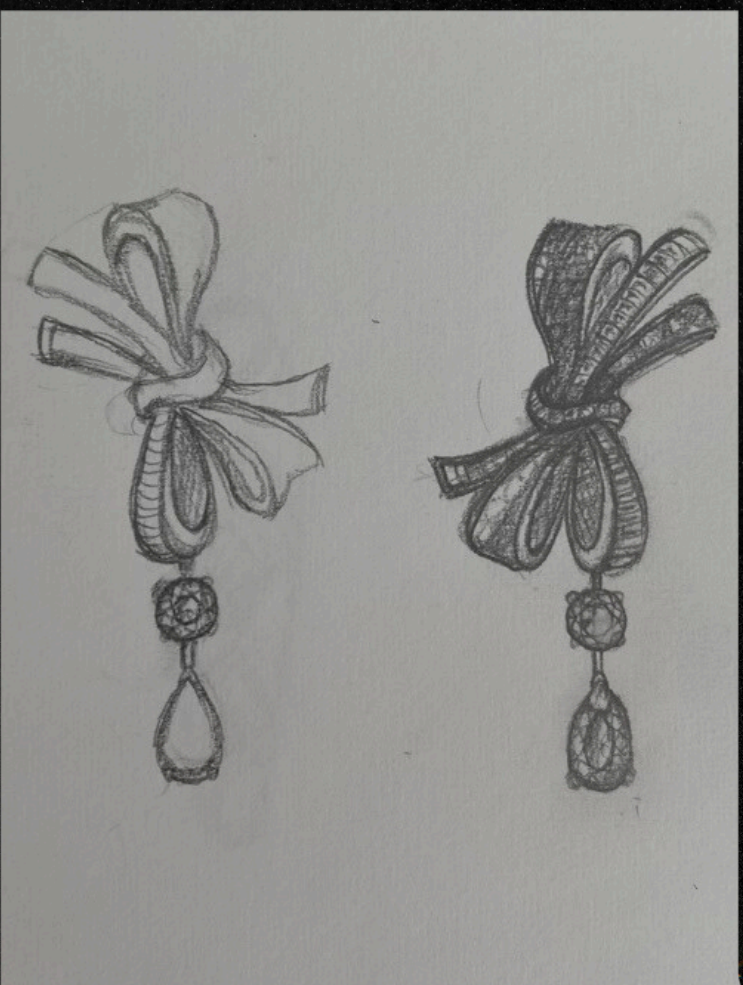
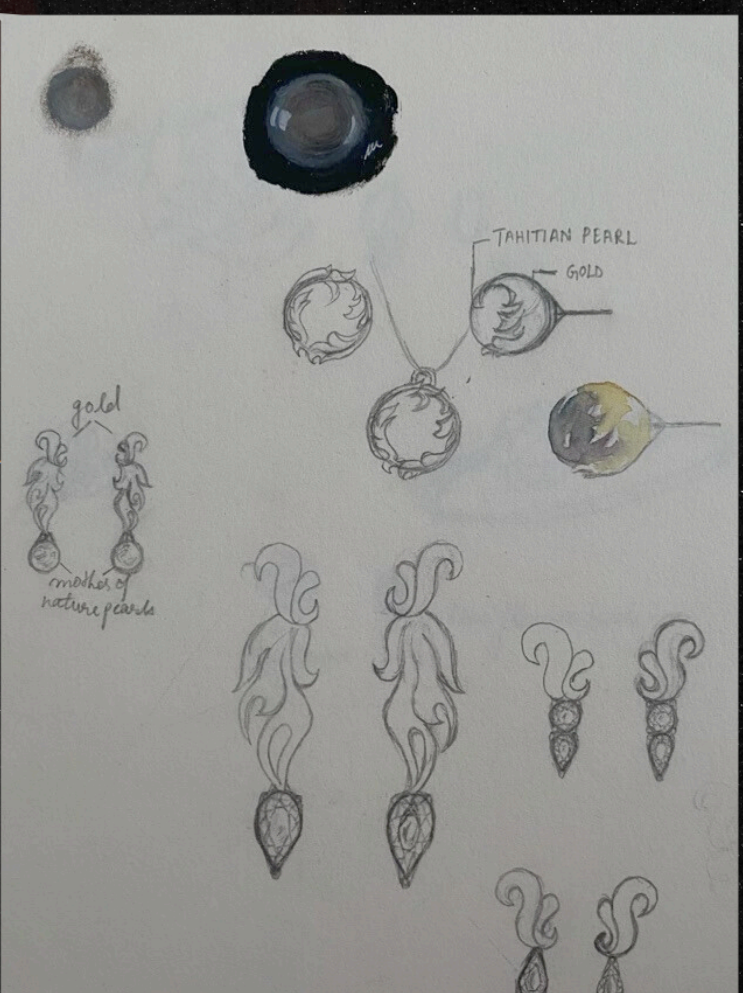
-Kolkata: Known for its delicate gold jewelleries , accented with beautiful filigree work.

- Punjab: Punjabi fashion is known for its chunky and bold designs, especially with regard to jhumkas or the long earrings.

Jewellery design

ILLUSTRATIONS

by Navkirat Kaur



THE TIMELESS ALLURE OF THE NAVRATANS

The Navratans have long been cherished for their beauty and the astrological powers that they are believed to possess, thus symbolising a deep connection to our cultural heritage. The fusion of contemporary style with traditional values is a reminder of the enduring importance of our beliefs.

Recently, Isha Ambani brought the Navratans into the spotlight at one of the most grand weddings in India, beautifully showcasing our rich cultural legacy. This collection, meticulously assembled over three years by her mother, Nita Ambani, features unique gems weighing around 40 carats each—truly a remarkable feat, given the rarity and clarity of such large stones.

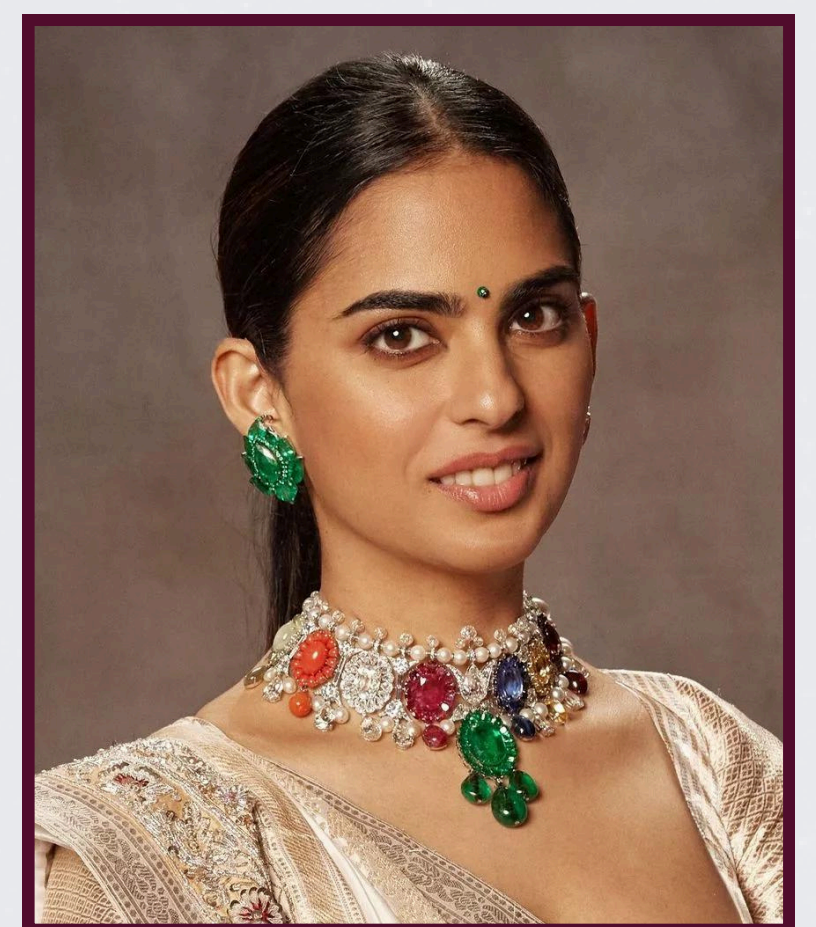
The centerpiece of the exquisite Navratan Haar is an emerald, flanked by Cat's Eye, Red Coral, Diamond, Ruby, Blue Sapphire, Yellow Sapphire, Hessonite, and Pearl, all arranged in exceptional craftsmanship. Isha further elevated her look with mismatched earrings—one an emerald and the other a diamond—setting a fresh trend that blends tradition with modernity. This celebration of the Navratans not only highlights their beauty but also honours our cultural roots in a stylish way.

The Significance of Each Gem

1. **Ruby:** Known as Manik, is a vibrant stone associated with the Sun. Wearing a ruby is believed to boost self-confidence, enhance leadership qualities, and spark love and passion, making it a favourite for those seeking to ignite their inner fire.
2. **Emerald:** Also called Panna, the green gem, represents Mercury, the planet of communication. It's thought to improve oratory skills and soothe throat-related issues, making it ideal for those who rely on their voice to express themselves.
3. **Blue Sapphire:** Known as Neelam is ruled by Saturn. It is associated with good luck and success, believed to instill determination and help the wearer reach their goals, making it a popular choice for ambitious individuals.
4. **Yellow Sapphire:** Called Pukhraj, is a beautiful yellow stone which promotes clarity of thoughts and good fortune. It's said to enhance focus, concentration, and memory, making it a valuable ally for students and professionals alike.
5. **Pearl:** The gem of the Moon, pearls are cherished for their calming properties. They are believed to bring inner peace, reduce anxiety and depression, and stabilize mood swings, creating emotional balance for the wearer.
6. **Red Coral:** Ruled by Mars, is a vibrant stone, known as Moonga, is believed to boost vitality and enhance financial stability. It also fosters harmony in relationships and marital bliss, making it a cherished gem for nurturing connections.
7. **Hessonite:** The Gomed Ratna is linked to Rahu and is said to bring the five fruits of life: salvation, financial prosperity, righteous living, meditation, and body pleasure. Wearing this gem is thought to cultivate a well-rounded and fulfilling life.
8. **Cat's Eye:** Also known as Lehsuniya, this unique stone resembles a cat's eye and is ruled by Ketu. It's believed to enhance intuition and insight, guiding the wearer through life's challenges with clarity and wisdom.
9. **Diamond:** The Heera is associated with Venus, the planet of love and beauty. Diamonds symbolize elegance, grace, and commitment, making them timeless tokens of love and devotion, cherished by many for their beauty and emotional significance.

Each of these gems carries a rich history and unique properties, making them not just beautiful adornments but also powerful symbols of personal strength and cultural heritage.

These nine gemstones not only exemplify beauty but also incorporate deep meaning that resonate with our cultural heritage and modern sensibilities.



ELECTRIC CARS AND FUEL CARS

Electric cars

Electric cars are changing the way we think about vehicles, not just because they're environment friendly, but also because of how their designs focus on sustainability, efficiency, and user comfort. Without the need for a traditional engine, electric cars have a more compact powertrain, which opens up more space inside the car and lowers the center of gravity, making them more stable on the road. Their sleek, aerodynamic designs—like Tesla's smooth, streamlined look—help reduce drag and improve range, making them both practical and stylish. The battery is often placed flat beneath the floor, which not only frees up more room for passengers and cargo but also helps improve the car's balance. Altogether, the design of electric cars is a combination of smart engineering and eco-consciousness, pushing the automotive industry toward a more sustainable future while still delivering great performance.

Fuel cars

The art of designing fuel-powered cars is balancing performance, efficiency, and style. For instance, the heart of the vehicle is found in the engine which, depending on either inline or V-shaped setup variations, must balance both power and fuel efficiency. Even aerodynamics plays a huge role; for instance, a sloping hood and a rear spoiler are designed to reduce drag as much as possible and consequently, fuel consumption by making the car slide easily through the air. Inside, it's about comfort, intuitive controls, and robust materials used with new entertainment technologies to keep those who ride in it entertained. With the advent of technology, car manufacturers are always on the lookout for new ways that these cars can become efficient, safe, and enjoyable. Even with the industry being steered toward electric vehicles, the principles behind designing fuel-powered cars will have a way of penetrating future automotive development.



Muscle Cars

More than a machine, a muscle car represents power and performance with an air of rebellion. These high-performance cars that characterized America during the 1960s utilized aggressive styling and their engines. When most people hear the term "muscle car," they envision a series of American-made cars, famous for powerful V8 engines and light bodies. While it seemed that with rising fuel prices and rising emissions standards to dispose of them during the 1970s, muscle cars would be going the way of history books, the cult genre began gaining new life in the 2000s when Ford, Chevrolet, and Dodge, among other manufacturers, revived advanced modern versions of the originals while holding to the raw power characteristic that defines the genre.



legends within the community

- FORD MUSTANG
- CHEVROLET CAMARO
- DODGE CHARGER

Ford Mustang: The design of the Ford Mustang since 1964 is quite vintage, bearing lines such as a long hood and three-bar tail lights; however, it still bears modern lines and LED lighting that makes the automobile sleek. Inside, sporty seats are backed by the latest technology. There are great color choices and performance packages as well. Its heritage and modern style mean that it appeals to both the old-timers and new buyers.

Chevrolet Camaro: Bold, aggressive lines of the Chevrolet Camaro will exhibit particularity and contrast in chiseled stance, sculpted body lines and a unique grille presented at four corners with sharp headlights that emphasize the front. In all this is coupled a modern rich interior and driver-focused technology. Since the car is a Camaro, it is custom tunable for performance-orientated and style conscious drivers.

The Dodge Charger: The Dodge Charger carries a bold styling theme that combines classic elements of muscle car with a modern flair, giving it a wide stance, aggressive front fascia, and sleek lines. Its commanding grille and elongated hood create a sporty silhouette, while the driver-centric interior offers advanced technology and spacious seating for enthusiasts as well as everyday drivers.





The Classics

Sports cars

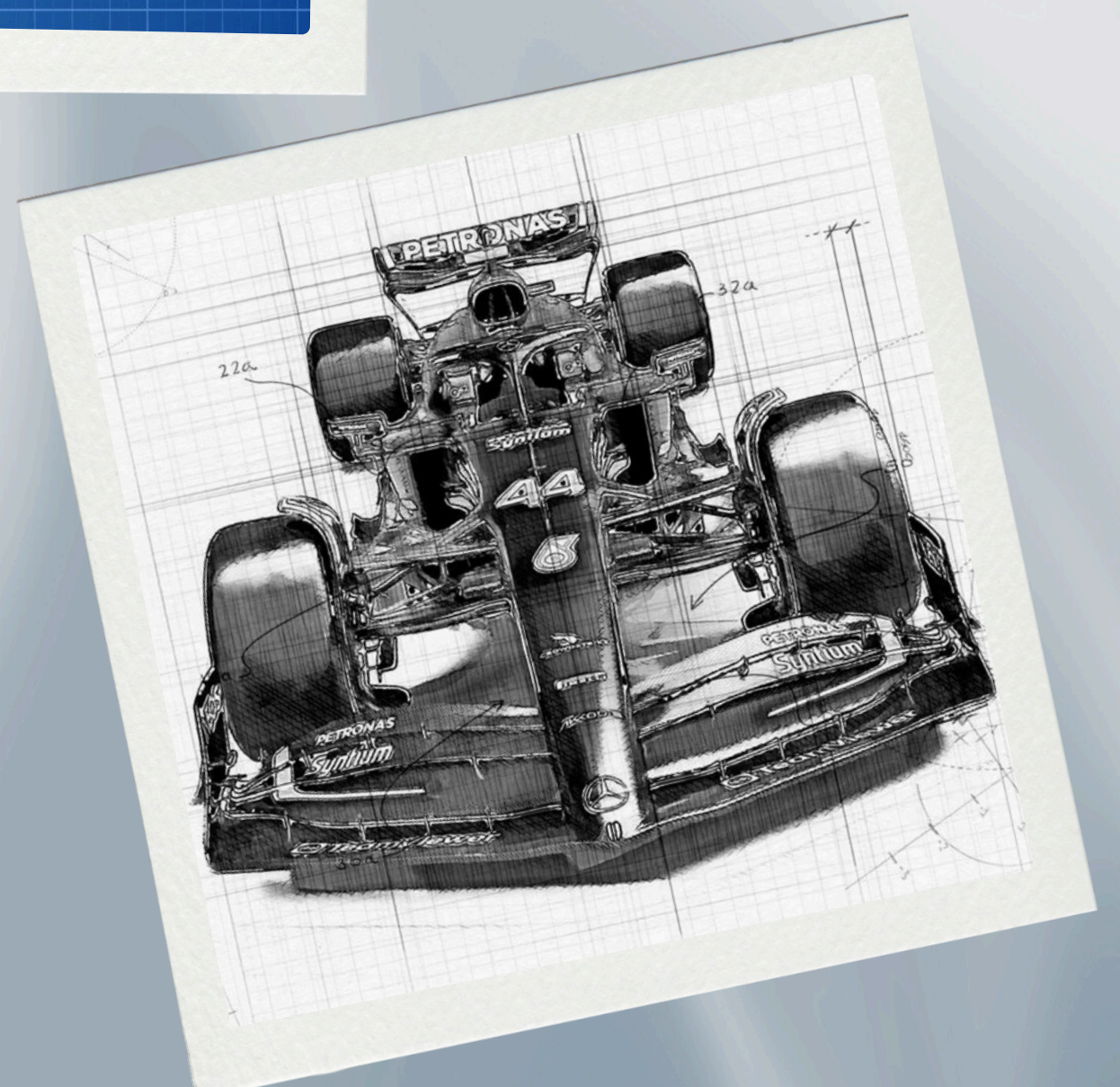
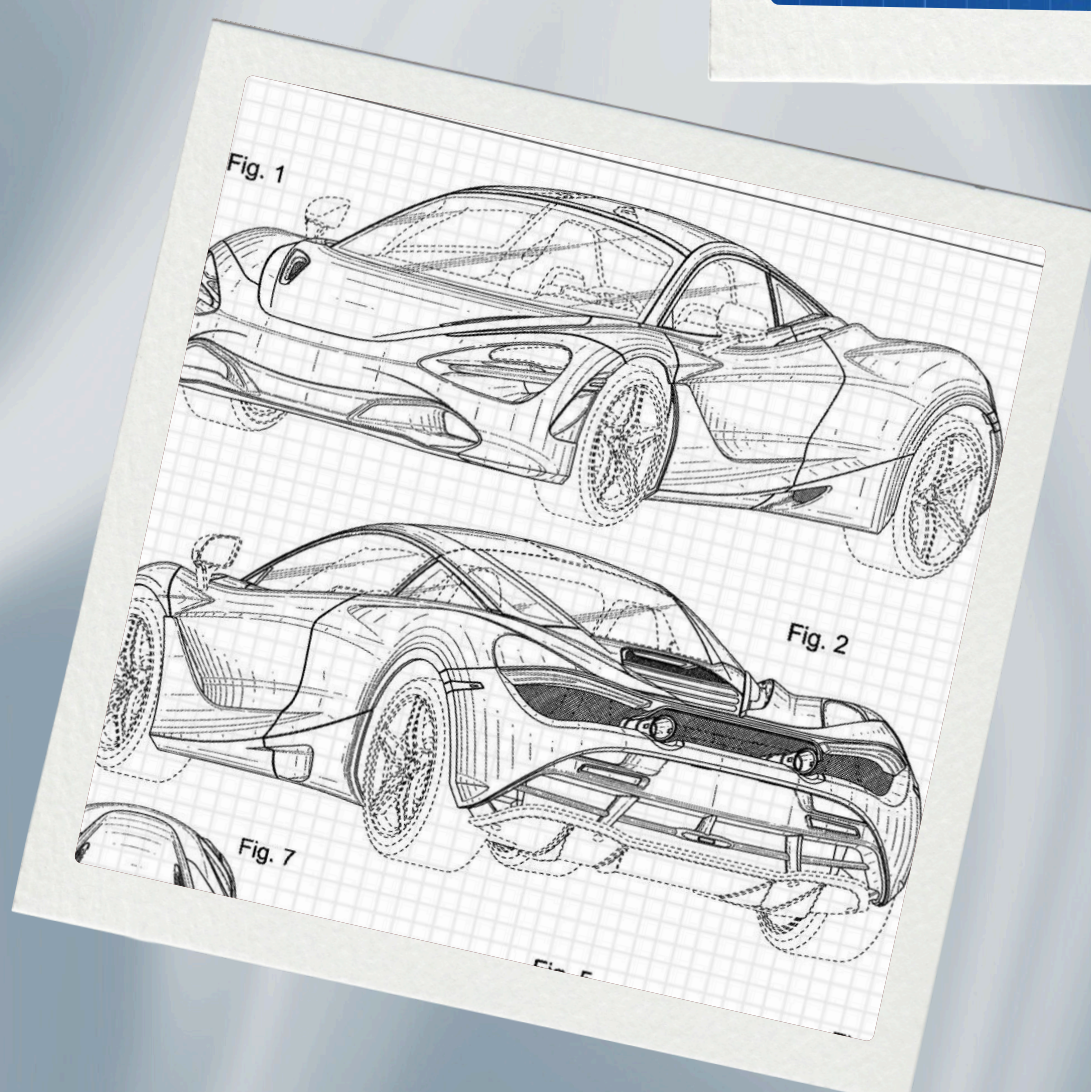
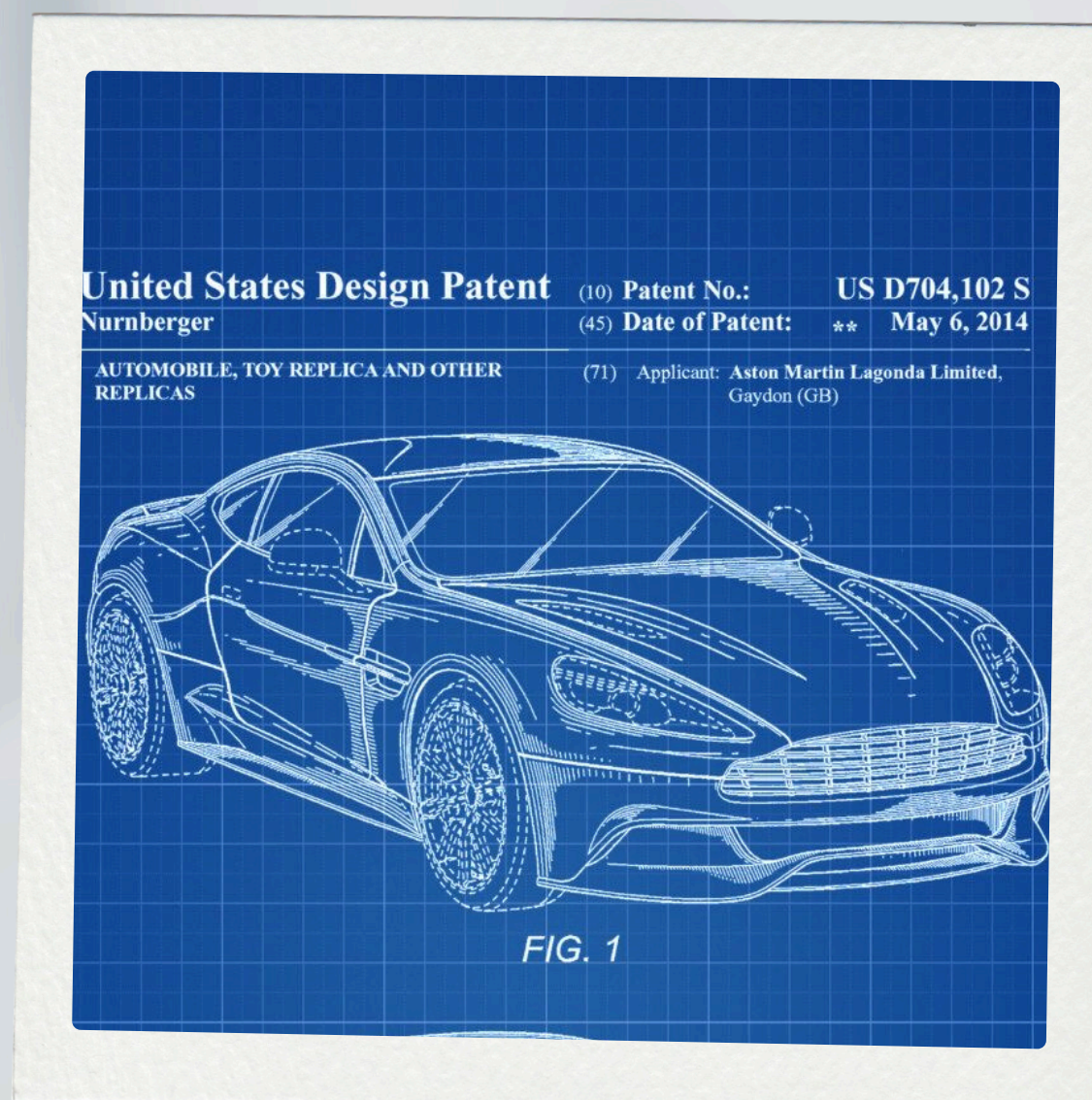
Sports cars are built for speed. Sports cars are known for their aggressive, bold lines and distinctive styling. These design elements often draw inspiration from racing heritage, with features like large air intakes, spoilers, and diffusers enhancing both aesthetics and performance. A sleek, low-profile design helps to reduce drag and improve aerodynamics, allowing the car to cut through the air with minimal resistance. Ferrari design blends aesthetic beauty with featuring sleek lines and the iconic prancing horse emblem. Driver-centric interiors use luxurious materials and modern technology, while the signature Rosso Corsa color symbolizes the brand. Rooted in racing heritage, Ferrari integrates innovations like hybrid technologies, ensuring each vehicle embodies both tradition and advanced performance.

Sedan

Sedan is a 4-door passenger car with a “three box design” describing the architecture of a car with a physically separated front end, middle section and rear end. Looking throughout history, the word “sedan” can be found as far back as 17th century, used in reference to an enclosed chair carried on poles. It was a luxury treatment given to people in France. Mercedes-Benz sedans combine luxury and performance with sleek, aerodynamic designs and iconic grilles. Their high-quality interiors incorporate advanced technology for an exceptional driving experience. Evolving from classic elegance to modern sport-luxury, Mercedes also embraces sustainability with eco-friendly materials, reflecting both its heritage and future vision.

Formula 1

Formula 1 car design is the pinnacle of advanced technology-aerodynamics, materials, and structural integrity. The front and rear wings are specifically optimized for maximum downforce, helped by a lightweight carbon-fiber chassis plus high-performance hybrid power units for enhancing driveability. Safety features do not take a back seat, and novel applications-such as the halo device-used to protect drivers from debris are integrated. Aston Martin's Formula 1 cars blend luxury design with high performance, featuring sleek, aerodynamic shapes in iconic British racing green. The AMR23 showcases advanced hybrid technology and driver-focused ergonomics, enhancing both performance and sustainability—reflecting the brand's commitment to innovation while honoring its rich heritage.



Handbag *designing*

Designing handbags is an artsy blend of painting, dressing up, and functionality. It starts with inspiration derived from anywhere: art, culture, or nature. Ideas are sketched out as preliminary, then refined and sometimes even created into prototypes while selecting the right materials that add to the beauty and durability of the handbag. Leather is a good choice, either the classic type or more recent sustainable alternatives. Functionality dictates size, compartments, and adjustable straps to make it more convenient to use. Thoughtfully designed colour schemes and patterns create an aesthetic appeal that contributes to the attraction of customers regarding the brand. The final stage is testing and feedback from the proposed users in order to ensure that the designs meet the requirements of the market, hence allowing the designer to design functional, stylish handbags that are also reflective of current trends.



THE ICONIC ONES



Tory Burch Fleming

INTERIOR ORGANIZATION

The Fleming is designed with practicality in mind, often featuring multiple compartments, including zippered pockets, to keep belongings organized, making it functional as well as fashionable.



Le Chiquito

STRUCTURED SILHOUETTE

Famous for its boxy, structured shape. It has a trapezoidal form, with a flat, firm base that allows it to stand upright. This structured silhouette gives the Kelly its elegant, polished look.

STITCHING AND CRAFTSMANSHIP

The Kelly is known for its exquisite hand stitching. Each bag is crafted by a single artisan over the course of up to 25 hours, using the finest saddle stitching techniques that ensure durability and longevity. The attention to detail in the stitching, reflects the unparalleled craftsmanship for which Hermès is famous.



Hermès Kelly

MATERIALS AND LEATHER

The Kelly is made from the highest quality materials, including a wide variety of leathers such as Togo, Epsom, Box Calf, and Clemence, as well as exotic skins like crocodile, ostrich, and lizard. These luxurious materials not only enhance the visual appeal of the bag but also contribute to its durability and tactile richness.

FLAP CLOSURE WITH TURN LOCK

The Kelly has a signature flap closure that extends over the front of the bag. The flap is secured with a turn-lock closure, which consists of two leather straps that are fastened with the iconic Hermès “palladium” or “gold-plated” turn-lock hardware.

INTERIOR AND PRACTICALITY

Luggage Tote is lined with high-quality leather or suede, featuring spacious compartments to hold essentials. Despite its structured exterior, the bag is highly functional and spacious, making it a great everyday bag. Many versions have inner pockets for better organization.

These panels can be tucked in or left out, giving the bag a dynamic, structured appearance. This detail contributes to the tote's sculptural and modern look.

WINGED GUSSETS



SIGNATURE FRONT ZIP POCKET

The front zip pocket is a key element of the Luggage Tote's design. The zipper is often accentuated with a contrasting color or prominent stitching, providing both a functional storage space and an aesthetic detail.

Céline Luggage Tote

FACE-LIKE DESIGN

Noted for resembling a smiling face, the positioning of the arched front zipper pocket, the curved stitching, and the way the handles and gussets are arranged create this playful, face-like effect, giving the bag a sense of personality.

HALF-MOON SHAPE

The Jackie bag is known for its curved, half-moon silhouette, which gives it a sleek, elegant look. This crescent shape sits comfortably under the arm and exudes a sense of understated sophistication.

LUXURIOUS MATERIALS

Crafted from high-quality materials, such as smooth or textured leather, suede, and Gucci's signature GG Supreme canvas.

PISTON LOCK CLOSURE

Piston lock closure. This metal clasp at the front is both functional and decorative, adding a unique, elegant touch while ensuring the bag's contents are securely fastened. It has become a hallmark of the bag's design.



Gucci Jackie

HOBO-STYLE

The Gucci Jackie has a relaxed, slightly slouchy form while maintaining its chic structure. This combination of structure and softness makes it versatile for both casual and formal settings, balancing luxury with everyday practicality.



Mayo College Girls' School
Mayo Link Road,
Ajmer.
(Rajasthan)

